

Houses of Ivy

- Design Research by Keith Evan Green
- Winner, *HOME House Project Competition*

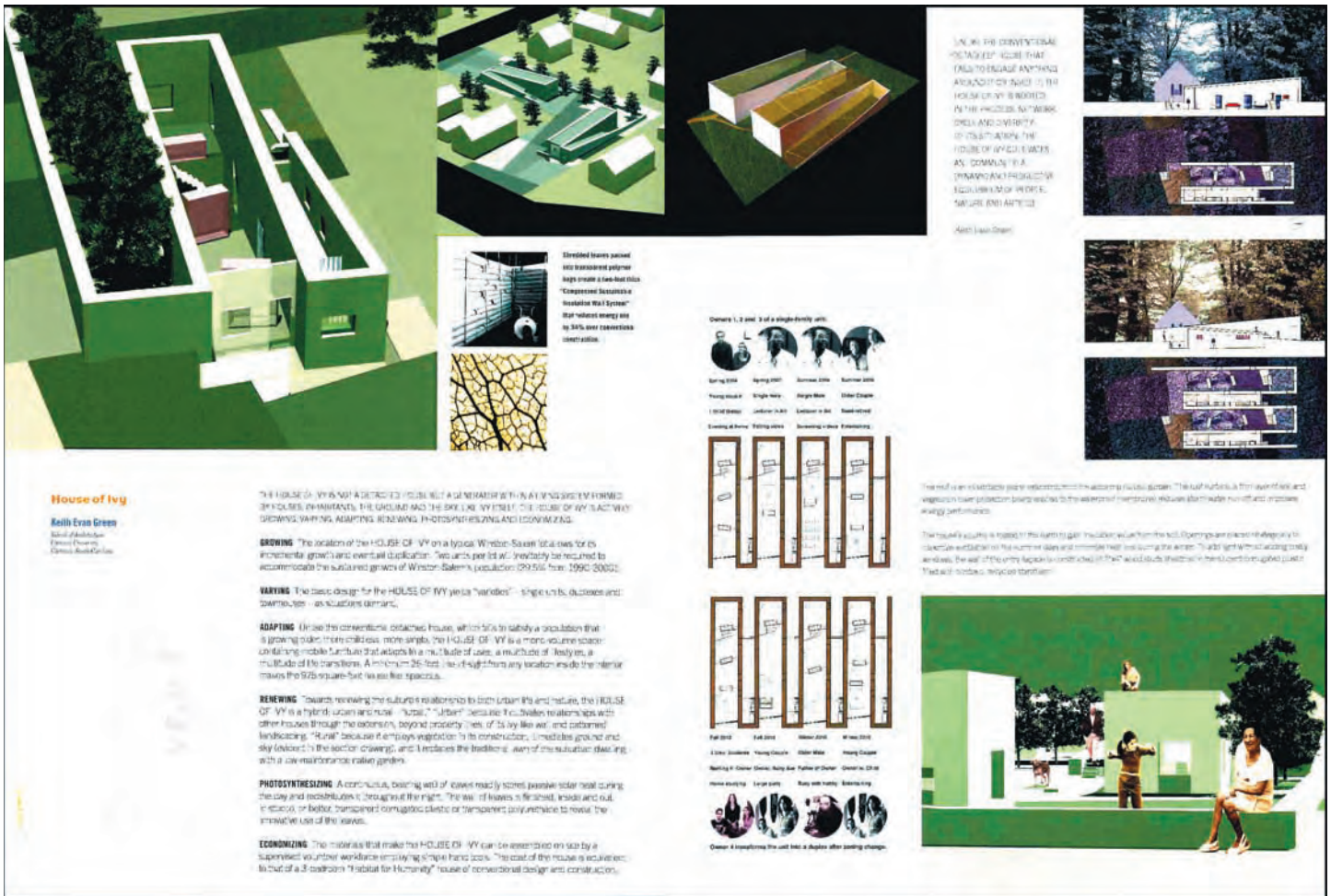


The *House of Ivy* is not a detached house but a generator within a living system formed by houses, inhabitants, the ground and the sky. Like ivy itself, the *House of Ivy* is actively growing, varying, adapting, renewing, photosynthesizing and economizing.

Unlike the conventional “detached” house that fails to engage anything around it or inside it, the *House of Ivy* is rooted in the process, network, cycle and diversity of its situation. The *House of Ivy* cultivates an socio-ecological community: a dynamic and productive equilibrium of people, nature and artifice.

Winner of the *HOME House Project* competition, a national competition seeking cutting edge designs for low-cost, ecologically-advanced suburban housing.

On this page: entry board and perspective
Next 2 pages: publication; details



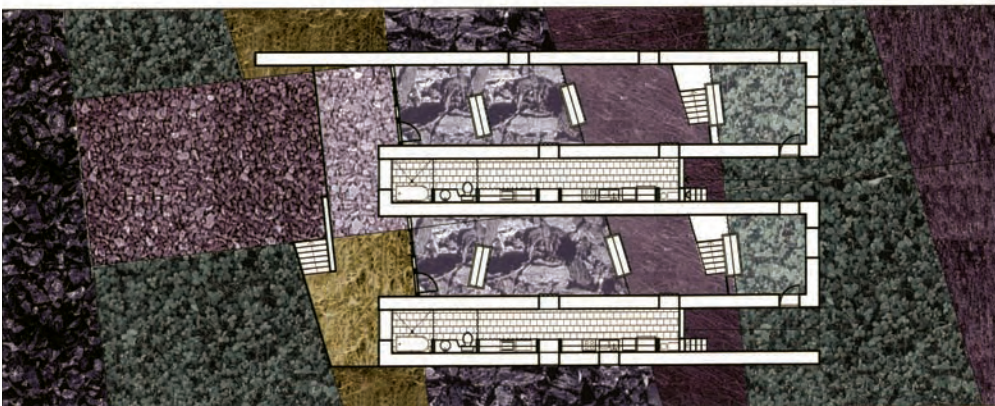
Houses of Ivy

- **Design Research by Keith Evan Green**
- **Winner, *HOME* House Project Competition**

The Houses of Ivy project was featured in *The HOME House Project* published by MIT Press (2004) with essays by competition jurors Steve Badanes, Ben Nicholson and Michael Sorkin. The Houses of Ivy project also continues to tour nationally with the other competition winning projects.

On this page: my entry as published in the MIT Press Book; the cover of the book





Houses of Ivy

LIKE IVY ITSELF, HOUSES OF IVY ARE ACTIVELY GROWING, VARYING, ADAPTING, RENEWING, PHOTOSYNTHESIZING AND ECONOMIZING.

GROWING • The location of the **HOUSE OF IVY** on a typical Winston-Salem lot allows for its incremental growth and eventual duplication. Two units per lot (as above) will inevitably be required to accommodate the sustained growth of Winston-Salem’s population (up 29.5% from 1990-2000).

ADAPTING • Unlike the conventional detached house, which fails to satisfy a population that is growing older, more childless, more single, **HOUSES OF IVY** are mono-volume spaces containing mobile furniture that adapt to a multitude of uses, a multitude of lifestyles, a multitude of life transitions (diagram to right: as a duplex).

